

Path for Assessment and Intervention



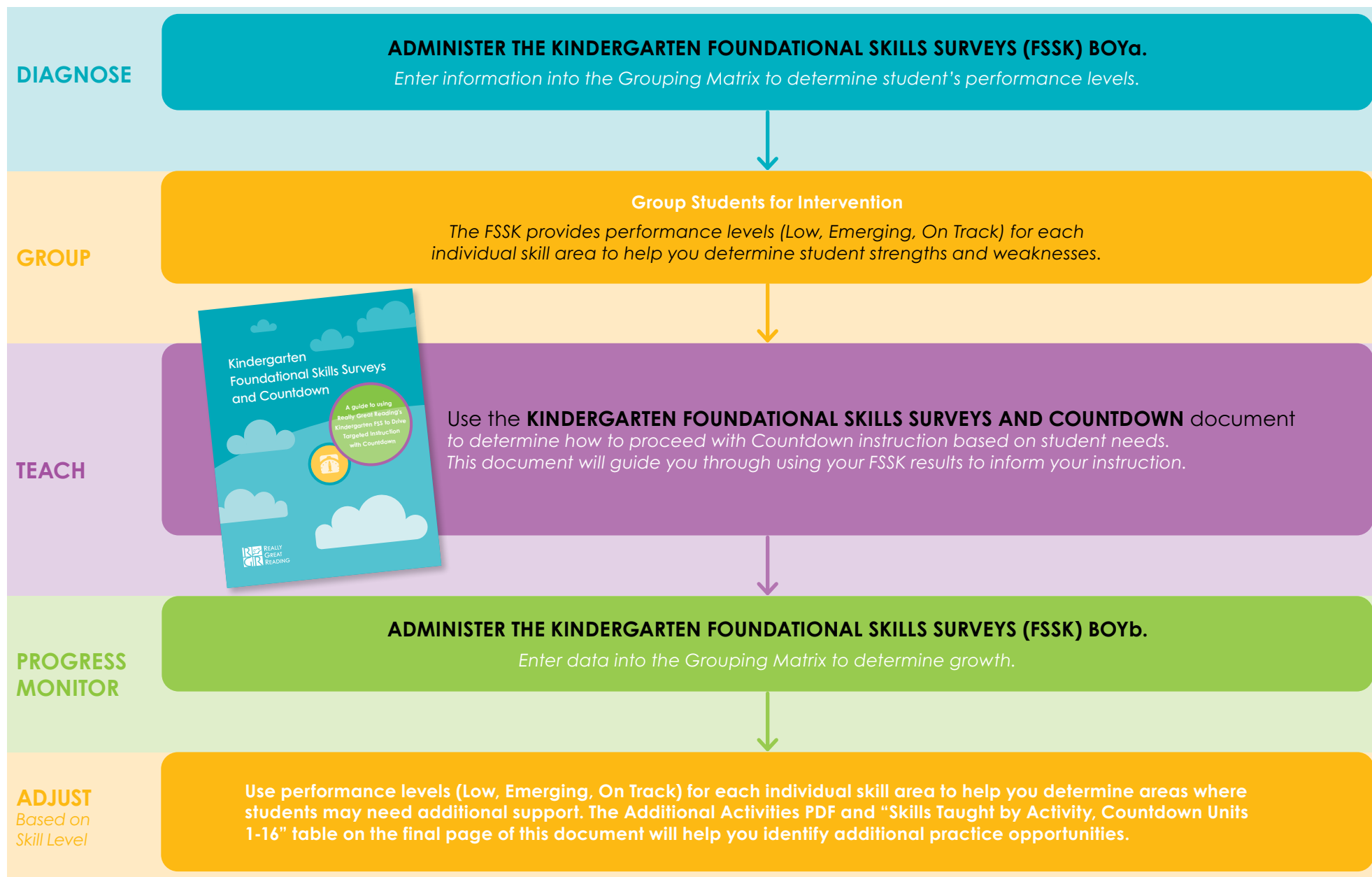
Kindergarten THROUGH Grade 12

reallygreatreading.com

Toll Free 866.401.7323 | Fax 240.465.0478 | P.O. Box 46, Cabin John, MD 20818

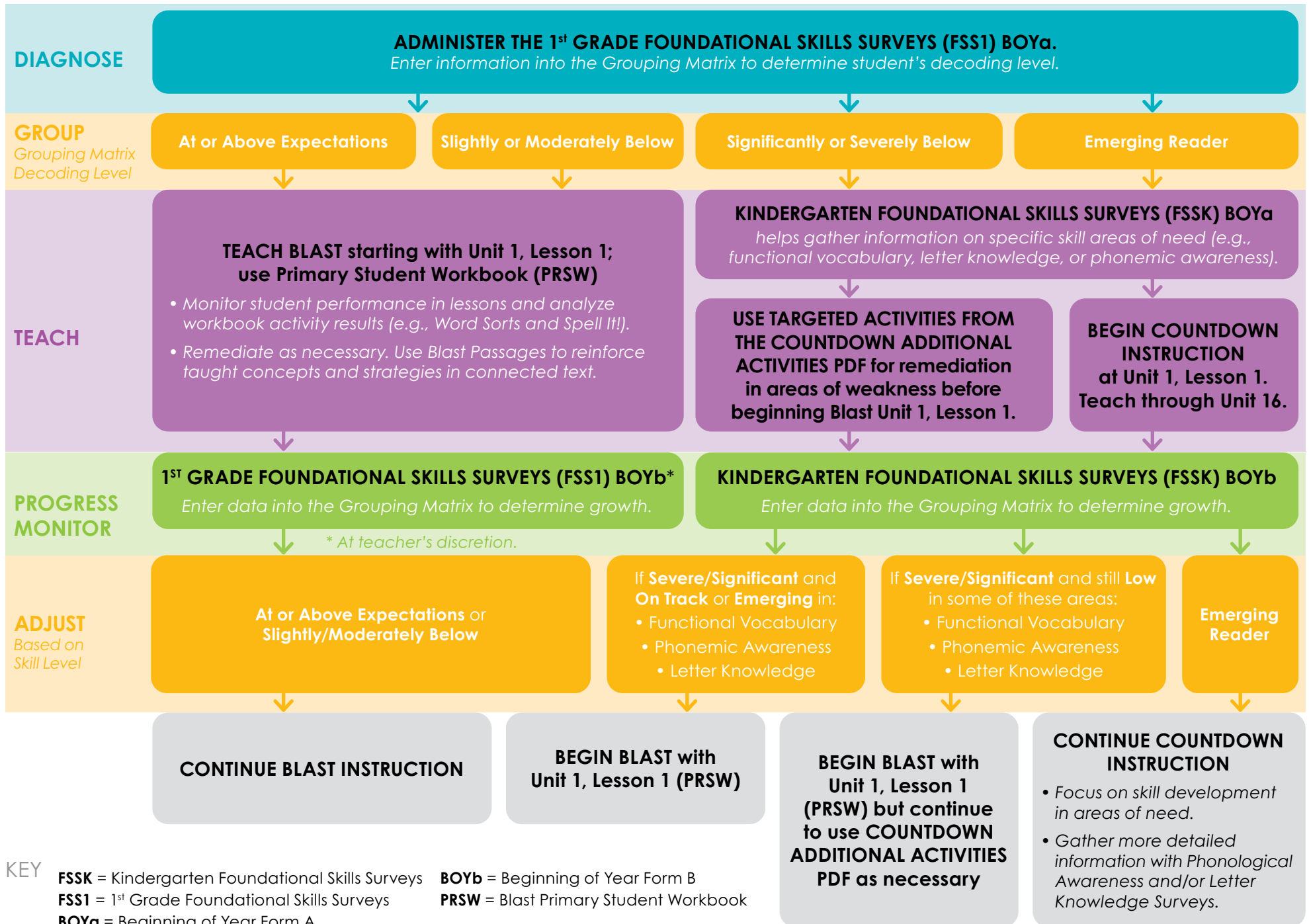


Kindergarten BOY Path for Assessment and Intervention

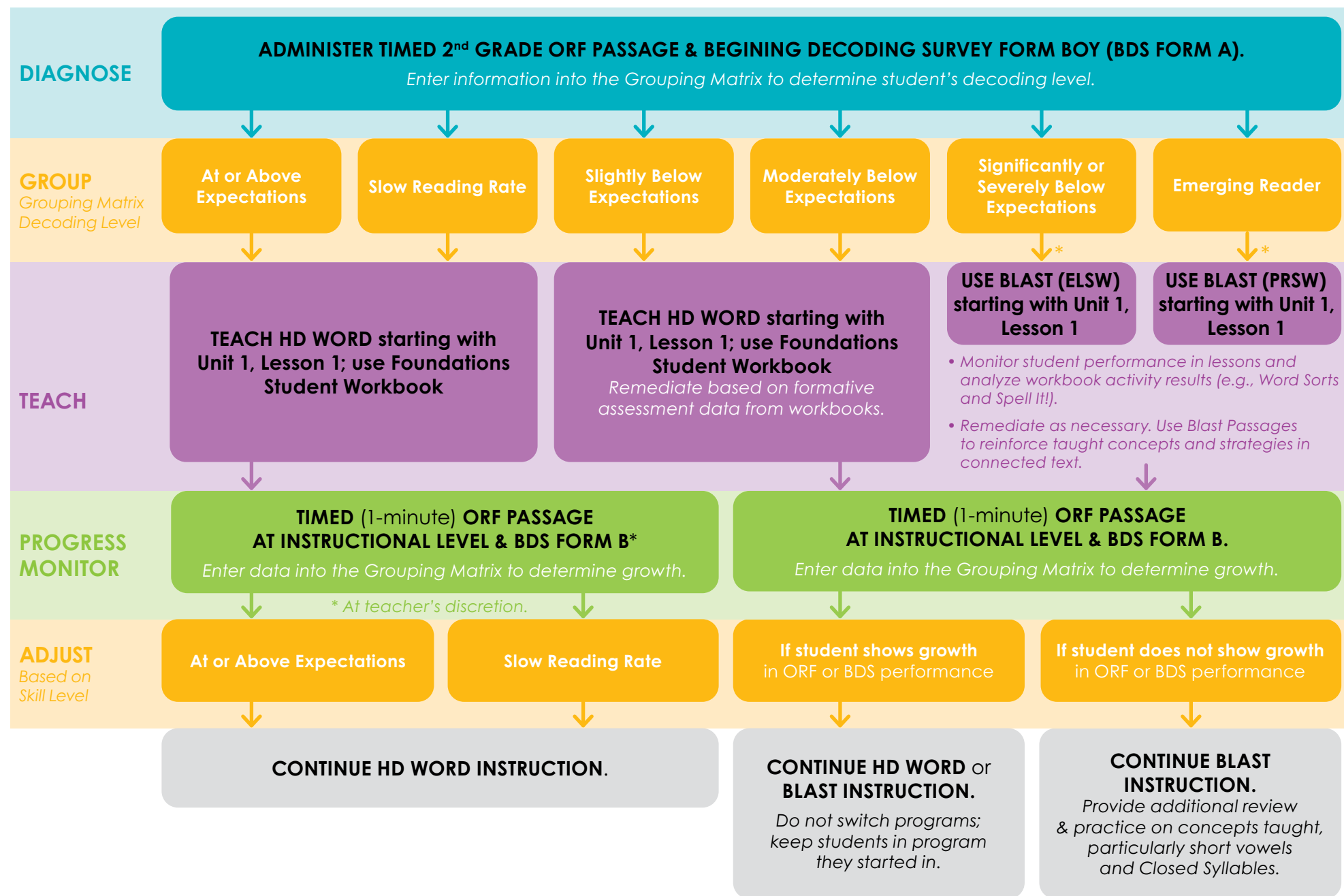


KEY **FSSK** = Kindergarten Foundational Skills Surveys
BOY_a = Beginning of Year Form A
BOY_b = Beginning of Year Form B

1st Grade BOY Path for Assessment and Intervention



2nd Grade BOY Path for Assessment and Intervention

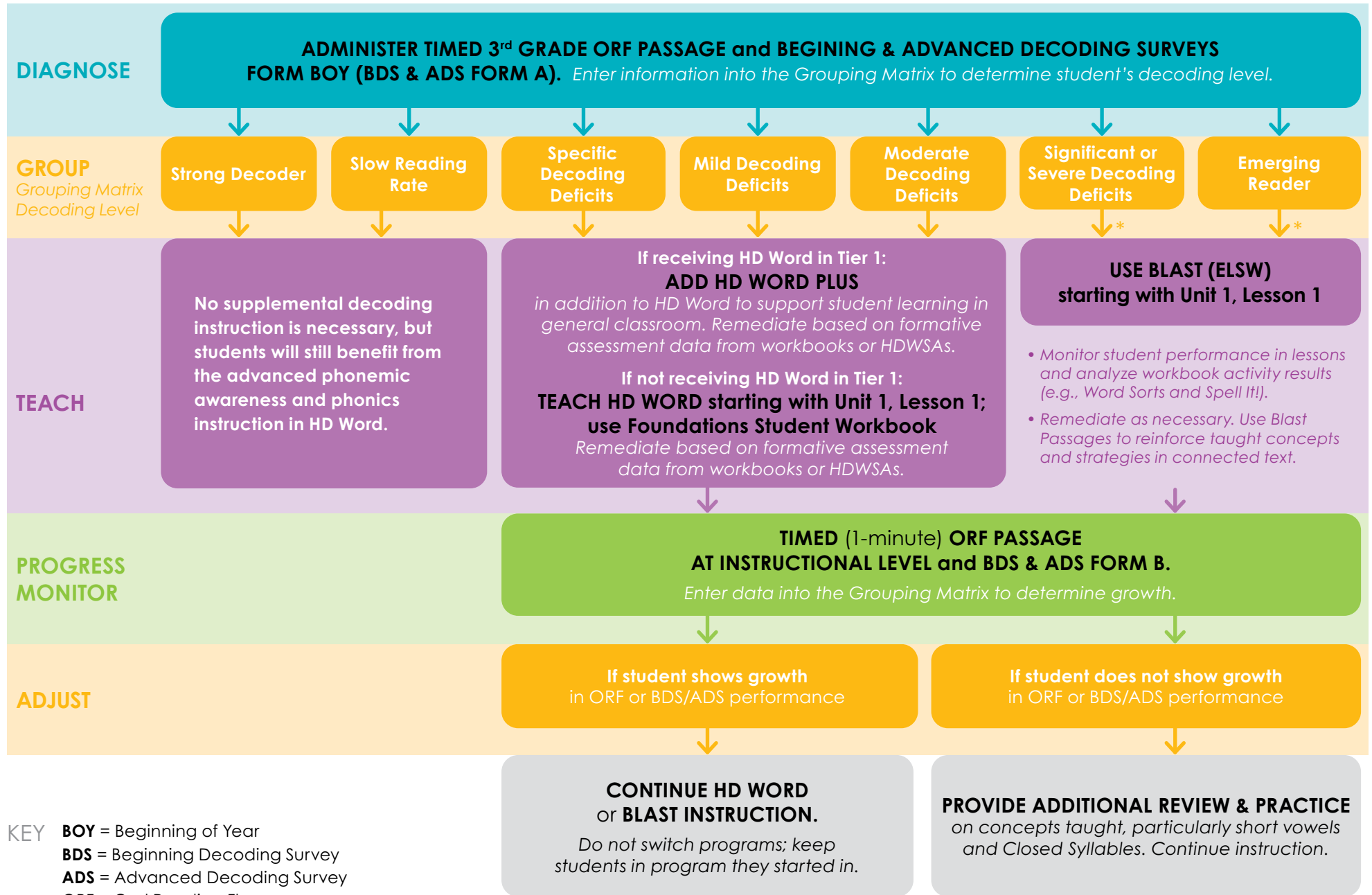


KEY BOY = Beginning of Year
BDS = Beginning Decoding Survey
ORF = Oral Reading Fluency

PRSW = Blast Primary Student Workbook
ELSW = Blast Elementary Student Workbook

* See Assessment Timeline and Flow Chart for additional assessment recommendations for Significantly or Severely Below or Emerging Readers.

3rd Grade BOY Path for Assessment and Intervention

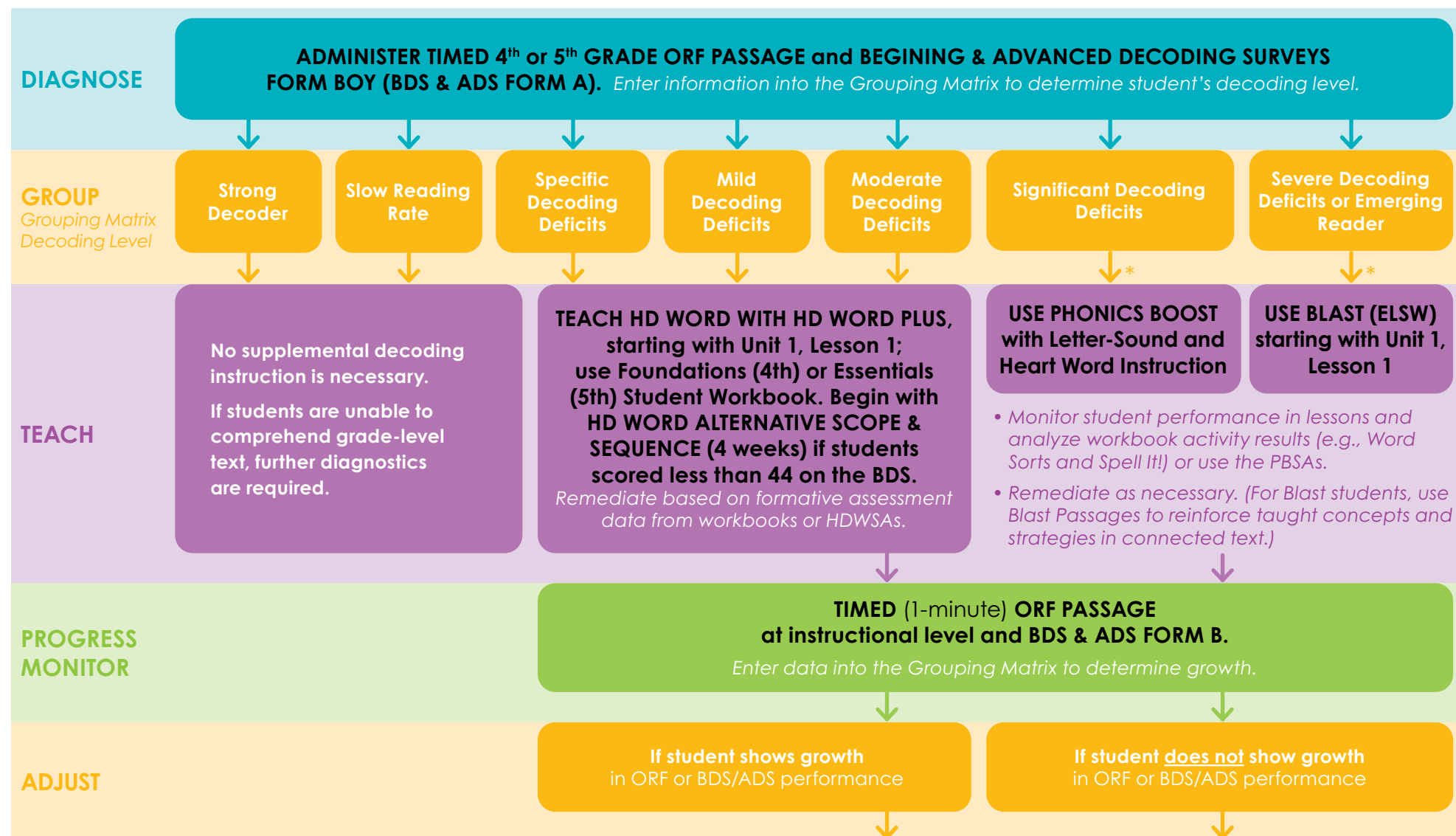


KEY

- BOY** = Beginning of Year
- BDS** = Beginning Decoding Survey
- ADS** = Advanced Decoding Survey
- ORF** = Oral Reading Fluency
- ELSW** = Blast Elementary Student Workbook
- HDWSAs** = HD Word Skills Assessments

* See Assessment Timeline and Flow Chart for additional assessment recommendations for Significant or Severe Decoding Deficits or Emerging Readers.

4th/5th Grade BOY Path for Assessment and Intervention

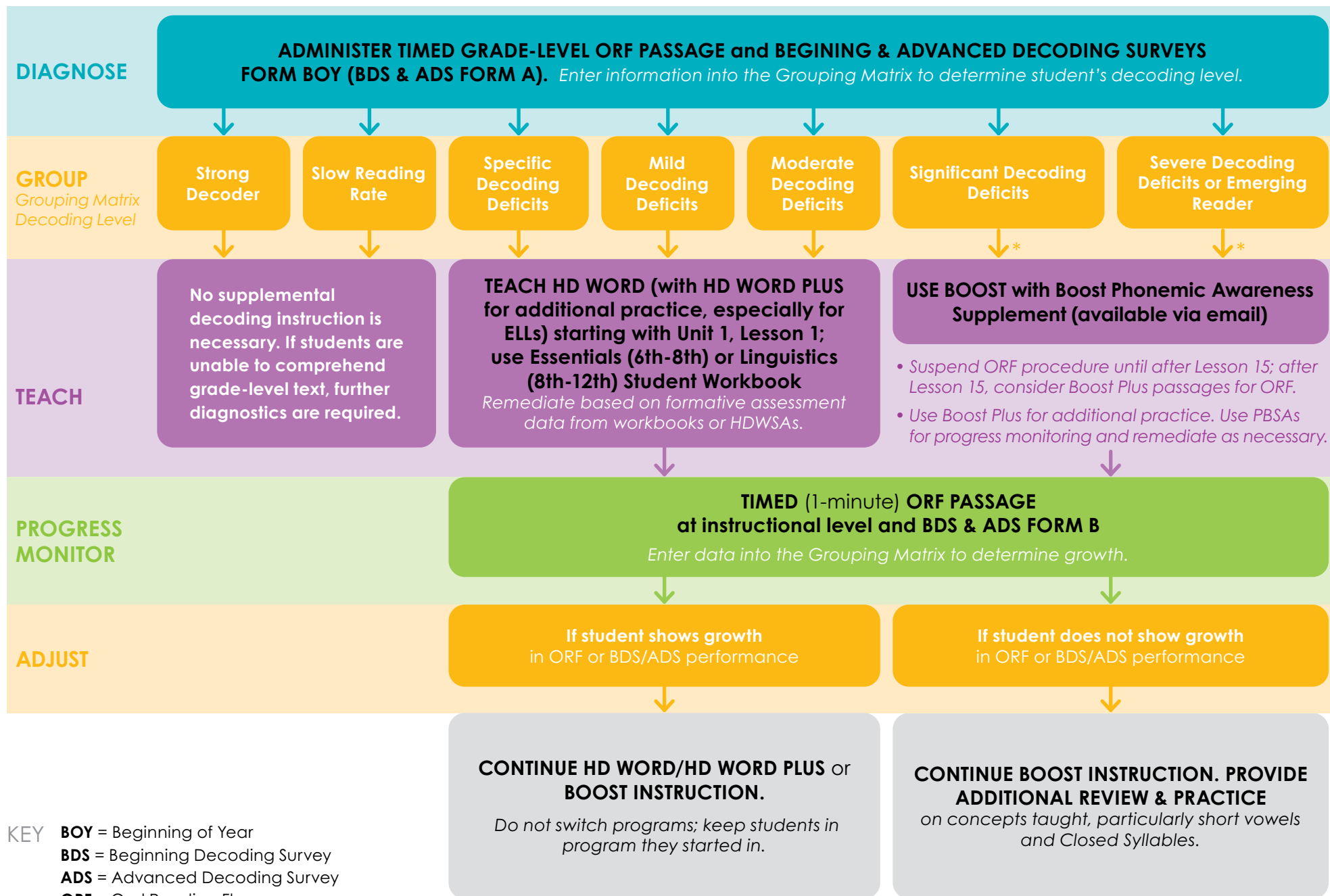


KEY

- BOY** = Beginning of Year
- BDS** = Beginning Decoding Survey
- ADS** = Advanced Decoding Survey
- ORF** = Oral Reading Fluency
- ELSW** = Blast Elementary Student Workbook
- HDWSAs** = HD Word Skills Assessments
- PBSAs** = Phonics Boost Skills Assessments

* See Assessment Timeline and Flow Chart for additional assessment recommendations for Significant or Severe Decoding Deficits or Emerging Readers.

6th–12th Grade BOY Path for Assessment and Intervention



KEY

- BOY** = Beginning of Year
- BDS** = Beginning Decoding Survey
- ADS** = Advanced Decoding Survey
- ORF** = Oral Reading Fluency
- HDWSA** = HD Word Skills Assessments
- PBSA** = Phonics Boost Skills Assessments

* See Assessment Timeline and Flow Chart for additional assessment recommendations for Significant or Severe Decoding Deficits or Emerging Readers.

Visual Glossary



FSSK BOYa

Kindergarten Foundational Skills Surveys BOY Form A

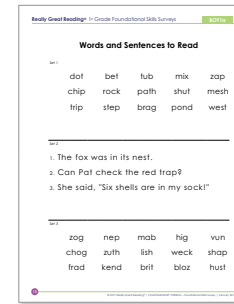
Complimentary beginning of year assessment of kindergarten foundational literacy skills. Assesses functional vocabulary, phonological/phonemic awareness, letter knowledge, decoding simple closed syllable words, and reading selected high-frequency words.



FSSK BOYb

Kindergarten Foundational Skills Surveys BOY Form B

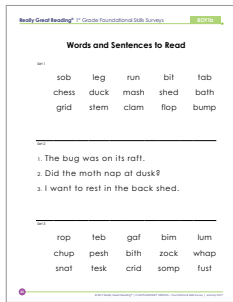
Complimentary assessment of kindergarten foundational literacy skills; offers an alternative parallel form to assess the same skills as FSSK BOYa for progress monitoring between beginning and middle of year benchmark assessments.



FSSI BOYa

1st Grade Foundational Skills Surveys BOY Form A

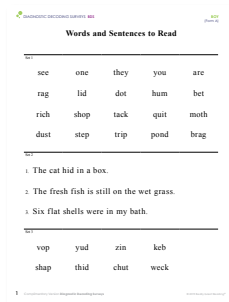
Complimentary beginning of year assessment of 1st grade foundational literacy skills. Assesses simple and complex single-syllable words with short vowels, digraphs, blends, and closed syllables and selected high-frequency words.



FSSI BOYb

1st Grade Foundational Skills Surveys BOY Form B

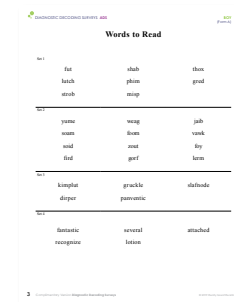
Complimentary assessment of 1st grade foundational literacy skills; offers an alternative parallel form to assess the same skills as FSSI BOYa for progress monitoring between beginning and middle of year benchmark assessments.



BDS

Beginning Decoding Survey BOY (Form A)

Part of the Diagnostic Decoding Surveys, the BDS is a complimentary assessment of 2nd-12th grade students' ability to decode simple and complex single-syllable words in isolation and in sentences and selected high-frequency words; for use starting at the beginning of 2nd grade.



ADS

Advanced Decoding Survey BOY (Form A)

Part of the Diagnostic Decoding Surveys, the ADS is a complimentary assessment of 2nd-12th grade students' ability to decode complex single-syllable words and decodable two-and three-syllable words in isolation; for use beginning in the middle of 2nd grade.



Countdown

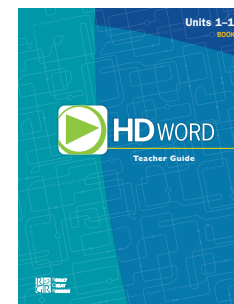
A whole-class, supplemental Tier 1 kindergarten program or a small- or large-group intervention for older emerging readers, typically in grades 1-2. Teaches foundational pre-decoding and decoding skills.



Blast

Blast Foundations

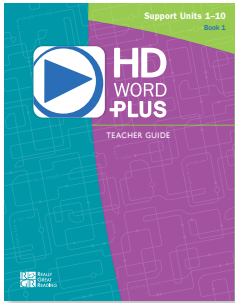
A whole-class, supplemental Tier 1 program for 1st grade or a small- or large-group intervention for 2nd grade and beyond. Teaches foundational decoding skills at the single-syllable and multisyllabic levels.



HD Word

A whole-class, supplemental Tier 1 program for Grades 2-5 or a small- or large-group intervention for grades 2-12. Focuses on advanced phonics knowledge for students with firmly established single-syllable basic decoding skills.

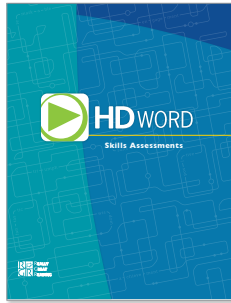
Visual Glossary



HDW+

HD Word Plus

A set of 32 Support Units aligned with each unit of *HD Word* that extend the learning for students participating in *HD Word* instruction; includes additional practice, instruction, and videos that help reinforce and extend the *HD Word* concepts.



HDWAs

HD Word Skills Assessments

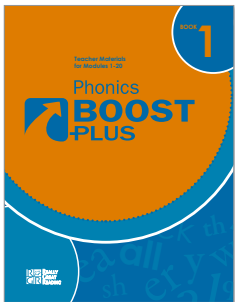
A set of 16 assessments aligned to the scope and sequence of *HD Word* that allow teachers to progress monitor students' performance in the corresponding *HD Word* units and identify areas in which students need more practice and support to master concepts.



Boost

Phonics Boost

A slow- to moderately-paced small group, Tier 3 and/or special ed intervention program for students in Grades 3 and up who struggle with basic phonics skills. Teaches foundational phonemic awareness and decoding skills at the single-syllable and multisyllabic levels.



Boost Plus

Phonics Boost Plus

A set of 40 modules providing additional practice for students that are struggling in *Phonics Boost* lessons; helps teachers target the exact skills and concepts from particular lessons where students need additional support.



BPSA

Phonics Boost Skills Assessments

A set of 40 assessments used to measure progress of students receiving *Phonics Boost* instruction; a highly structured way to assess the specific skills students should have mastered after certain lessons.